

SX3000



SIAMDENT.
Morita Group Company

Standard Features & Function



Assistant's Syringe Holder

High power suction syringe, saliva ejector and 3-way syringe are provided with multi-functional keypad switch



Spittoon Unit Body

Hygienic ceramic spittoon with cup filler, water basin and assistant's instrument holders



LED Operating Light

Bright shadow-free illumination & detachable silicon handle cover.



Extendable Headrest

Adjustable positioning for children & adults



Doctor Tray Table

Spacious tray table with 5 instrument holders and first priority system



Foot Controller

Easy-to-use one foot pedal with multi-functions



Armrest

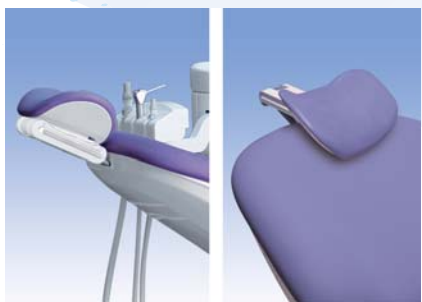
Well-balanced single armrest provided



Junction Box

Convenient for installing the chair unit

Optional Features & Function



Extendable Headrest Type-II

Adjustable positioning for children & adults



Safety Lock Under Base

Emergency stop under base cover



Water Tank

Distilled water is supplied for handpiece

Standard Equipment & Feature

Doctor side

- * Doctor tray table with 5 instrument holders
- * High speed air turbine circuit with fiber optic 4H tubing (2)
- * Low speed air motor circuit with 4H tubing (1)
- * Doctor side 3-way syringe with tubing (1)
- * Doctor side multi-functional keypad switch

Assistant Side

- * Assistant instrument 3 holders
- * High power suction syringe
- * Saliva ejector on assistant side
- * 3-way syringe with tubing
- * Assistant side multi-functional keypad switch
- * Emergency stop by holder bar

Spittoon Unit Body

- * Hygienic ceramic spittoon with water basin
- * Sensor-type cup filler
- * Drain cut-filter
- * Manual water control knobs for water basin
- * On-Off switches for basin water & cup filler

LED Operating light

- * On-Off by automatic Positioning
- * Operating light On-Off by sensor

Foot Controller

- * Foot pedal for handpieces & levers for chair movements
- * Switch for water supply for handpieces
- * Switch for light On-Off
- * One preset positioning & zero position
- * Emergency stop by pedal

Armrest

- * Single armrest

Junction box

- * Main electric, air & water switches
- * Adjusted to local line voltage

Chair Driving System

- * Hydraulic system
- * Two preset positioning & zero position
- * Gargling positioning & last treatment positioning

Vacuum System

- * Air vacuum system or motor vacuum system

Optional Equipment & Features

- * 2H, 3H, 4H Tubing For high & low speed
- * Micromotor circuit & tubing
- * Built-in type scaler
- * Built-in type light cure
- * Built-in type intraoral camera
- * Dental size film viewer
- * Panorama size film viewer
- * LCD Monitor arm

- * LCD Monitor adapter on doctor tray
- * Water tank
- * Water warmer
- * Twin armrest
- * Motor suction wet on dry system
- * Water venturi saliva ejector
- * Emergency stop under base cover

We reserve the right to change the specifications without prior notice

Colour Guide



Pink



Orange



Green



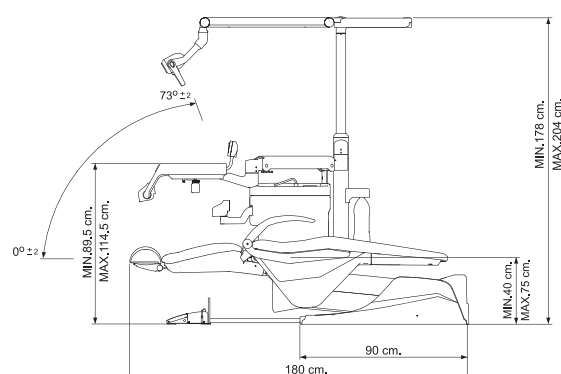
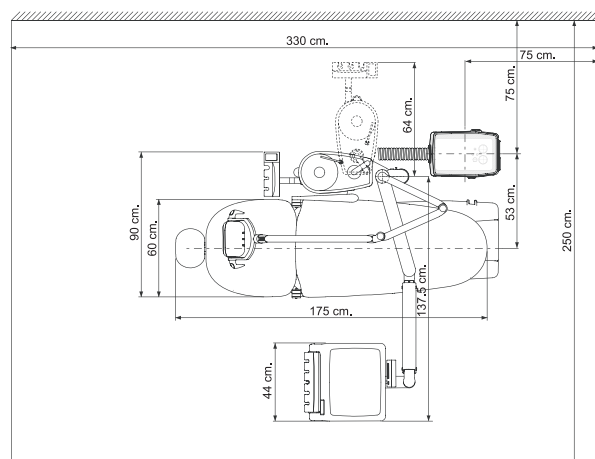
Blue



Purple

■ Specifications

Name	SX 3000
Model	SX 3000
Source voltage	Adjusted to local line voltage
Power consumption	1.5KVA
Patient seat elevation system	Hydraulic pantograph system
Seat height	840 mm. 580 mm.
Backseat tilt angle (from horizontal level)	Backseat tilt angle (from horizontal level)
Weight	Approx. 200 kg.



SIAMDENT.

Morita Group Company

71/10 Moo. 5, T. Tharkham, A. Bangpakong, Chachuengsao, 24130 Thailand

TEL: +66 (0) 3857 3042, FAX: +66 (0) 3857 3043

www.siamdent.com